

prospectormetalscorp.com

DISCOVERY
GROUP



PROSPECTOR

Metals Corp.

TSXV: PPP ▪ OTCQX: ETHOF ▪ FRANKFURT: 1ET

Prospector Metals Corp.

April 2022

FORWARD LOOKING STATEMENTS

This presentation is current as of April 2022. The information contained in this presentation is provided by Prospector Metals Corp. (“Prospector” or the “Company”) for informational purposes only. It does not constitute investment advice, or an offer to issue or arrange to issue, or the solicitation of an offer to issue, securities of the Company. All references to Prospector are meant to apply equally to the parent company and its subsidiaries.

This presentation contains certain “forward-looking statements” within the meaning of Canadian securities legislation, including statements regarding the Company's exploration plans for and resource potential of the Company's projects. Although the Company believes that such statements are reasonable, it can give no assurance that such expectations will prove to be correct. Forward-looking statements are statements that are not historical facts; they are generally, but not always, identified by the words “expects,” “plans,” “anticipates,” “believes,” “intends,” “estimates,” “projects,” “aims,” “potential,” “goal,” “objective,” “prospective,” and similar expressions, or that events or conditions “will,” “would,” “may,” “can,” “could” or “should” occur, or are those statements, which, by their nature, refer to future events. The Company cautions that forward-looking statements are based on the beliefs, estimates and opinions of the Company's management on the date the statements are made, and they involve a number of risks and uncertainties. Consequently, there can be no assurances that such statements will prove to be accurate and actual results and future events could differ materially from those anticipated in such statements. Except to the extent required by applicable securities laws and the policies of the TSX Venture Exchange, the Company undertakes no obligation to update these forward-looking statements if management's beliefs, estimates or opinions, or other factors, should the TSX Venture Exchange, the Company undertakes no obligation to update these forward-looking statements if management's beliefs, estimates or opinions, or other factors, should change. Factors that could cause future results to differ materially from those anticipated in these forward-looking statements include, accidents and other risks associated with mineral exploration operations, the risk that the Company will encounter unanticipated geological factors, or the possibility that the Company may not be able to secure permitting and other governmental clearances, necessary to carry out the Company's exploration plans, and the risk of political uncertainties and regulatory or legal changes in certain of the jurisdictions where the Company carries on its business that might interfere with the Company's business and prospects.

The reader is cautioned not to place undue reliance on forward-looking statements, and is urged to refer to the Company's reports, publicly available through the Canadian Securities Administrators' System for Electronic Document Analysis and Retrieval (SEDAR) at www.sedar.com for a more complete discussion of the Company's business and the risks associated with that business.

This presentation does not constitute an offer of shares for sale in the United States or to any person that is, or is acting for the account or benefit of, any U.S. person [as defined in Regulation S under the United States Securities Act of 1933, as amended (the “Securities Act”) (“U.S. Person”)], or in any other jurisdiction in which such an offer would be illegal. This presentation may only be disseminated or transmitted into any jurisdiction in compliance with, and subject to, applicable securities laws. Readers are required to ensure their compliance with applicable security laws.



INVESTMENT HIGHLIGHTS

- Dedicated corporate and technical team with a **PROVEN TRACK RECORD OF DISCOVERY** and wealth creation
- Business model focused on **COST-EFFECTIVELY** exploring **DISTRICT-SCALE**, early-stage gold and base metal projects
- Currently have **THREE DRILL-READY PROJECTS** plus a **FULL PIPELINE** of recently staked claim blocks
- Core objective is to create **TRANSFORMATIONAL SHAREHOLDER VALUE** through discovery of new mineral districts
- **PROACTIVE RELATIONSHIP BUILDING** with First Nation and local communities
- **“DISCOVERY DRIVEN”**



DISCOVERY GROUP – RAISED OVER \$750M SINCE 2002



DISCOVERY
GROUP

Significant Past Transactions:

GREAT BEAR RESOURCES Acquired for **\$1.8B** by Kinross in 2022

NORTHERN EMPIRE RESOURCES CORP Acquired for **\$117M** by Coeur Mining in 2018

KAMINAK GOLD CORPORATION Acquired for **\$520M** by Goldcorp in 2016



MANAGEMENT & DIRECTORS



Alex Heath, CFA

President & CEO

CFA charter holder with over 17 years of investment banking and capital markets experience.



Craig Roberts, P.Eng.

Co-Chairman

Mining engineer with over 30 years of operations, consulting and investment banking experience.



Robert Scott, CPA, CA, CFA

CFO

Over 20 years experience in accounting, corporate finance, banking and management of Canadian publicly traded companies. Mr Scott is also CFO for Great Bear Resources.



Jo Price P.Geo., MBA

VP Exploration

Exploration geologist and project manager with 20+ years experience.



Dr. Rob Carpenter Ph.D., P.Geo.

Co-Chairman

Over 30 years of corporate and technical mineral exploration experience. Co-founder and President and CEO of Kaminak Gold.



Henk Van Alphen

Director

Over 36 years in the mining business: drilling contractor and president, CEO and Director.



Michael Murphy

Director

Co-founder and director of Torex Gold Resources Inc., President and CEO of Global Battery Metals Ltd



Michelle Tanguay

VP Community & Environment

Over 25 years of experience working within the resource extraction industry.



ADVISORY TEAM



Dr. Robert Brozdowski Ph.D., P.Geo.

Technical Advisor

Over 30 years diverse exploration experience emphasizing magmatic Ni-Cu-PGE & gold, including uranium, VMS, SEDEX, and IOCG deposits. Obtained Ph.D. Geology from Western University, London, ON, M.A. Geology from Temple University, Philadelphia, PA), and a B.S. Geosciences from Pennsylvania State University.



Jodie Gibson M.Sc., P.Geo.

Technical Advisor – Newfoundland

Mr. Gibson is an exploration geologist with over 14 years mineral exploration experience throughout the North American Cordillera from Alaska to Mexico; including syngenetic and epigenetic precious and base metal systems.



John Robins P.Geo.

Advisor

Co-Founder and Principal of Discovery Group. Professional geologist, prospector and entrepreneur with over 35 years of experience in the mining industry.



Dan MacNeil M.Sc., P.Geo.

Technical Advisor

Economic Geologist specializing in Precious and Base Metals with over 20 years of experience in a wide variety of geological settings in the Americas, Scandinavia, Eastern Europe and the Near East.



Dr. Alan Wainwright Ph.D., P.Geo., FSEG

Technical Advisor

Economic geologist with 20+ years of mineral exploration and research experience in North America, South America, Europe and Asia, focused on base metals and gold.



Jim Paterson B.Comm

Advisor

Co-Founder and Principal of Discovery Group. Over 22 years of industry experience, including capital raises, acquisitions, joint-ventures, spin-outs, RTOs & IPOs, and corporate development activities.



PROJECTS



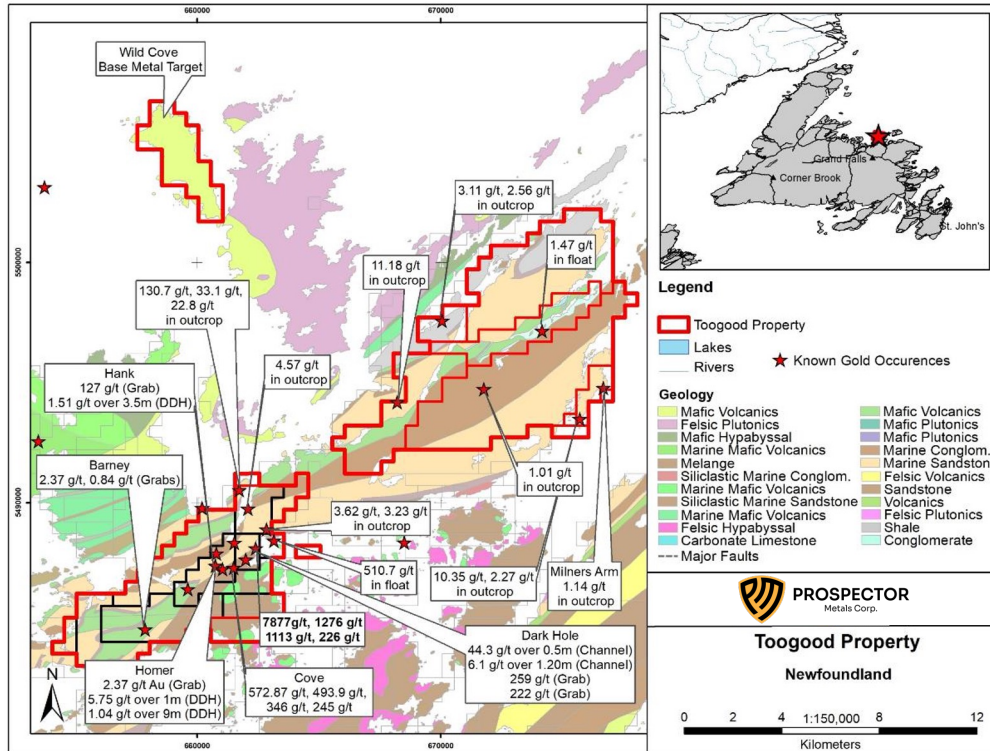


TOOGOOD PROJECT,

Orogenic Gold, Newfoundland

- 118 km² property in geological belt that is host to several discoveries including Marathon Gold's Valentine Lake project.
- Numerous occurrences of coarse and fine visible gold.
- Both orogenic and epithermal depositional environments.
- 28 km of prospective strike.
- High-grade Gold discovered in initial exploration program (see July 21 and Aug 9, 2021 news releases)

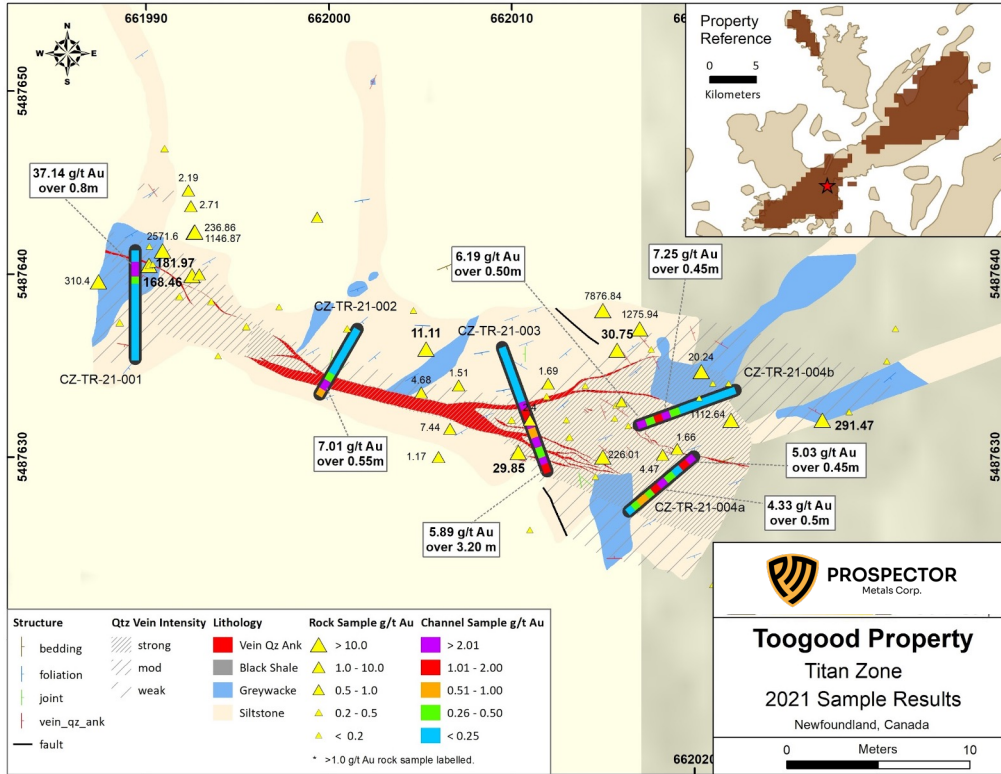




TOOGOOD PROJECT, Newfoundland

- Initial prospecting and mapping, together localized structural analysis of known prospects has identified 3 high grade gold projects assaying up to 7,877 g/t Au.
- LiDar survey completed
- Airborne Magnetic survey completed
- Local soil and biochemical surveys completed
- Stripping, trenching and chip sampling at Quinlan, Titan and the new Sherwood showing has completed and assays are pending
- Maiden drill program to begin in H1-2022



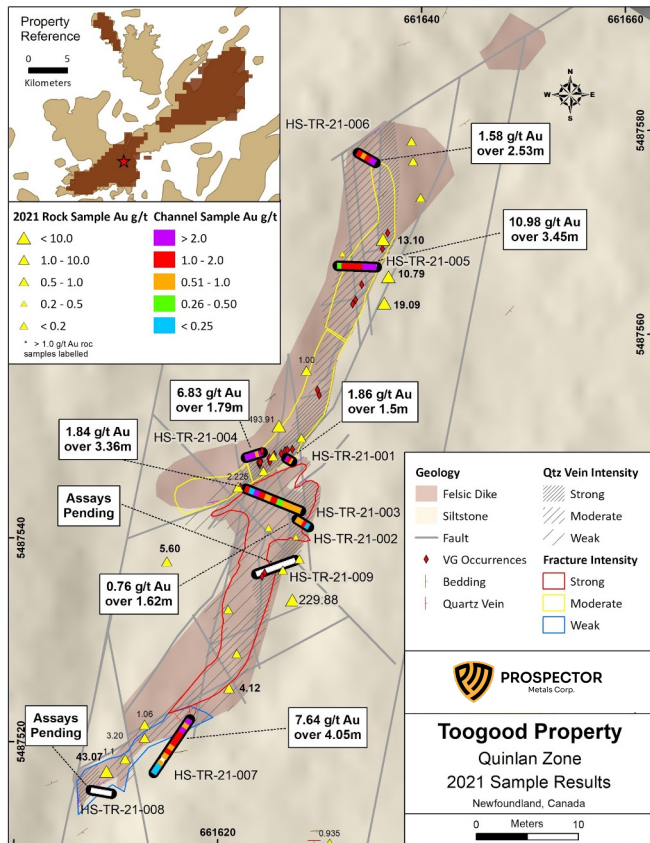


TOOGOOD PROJECT,

Titan Showing

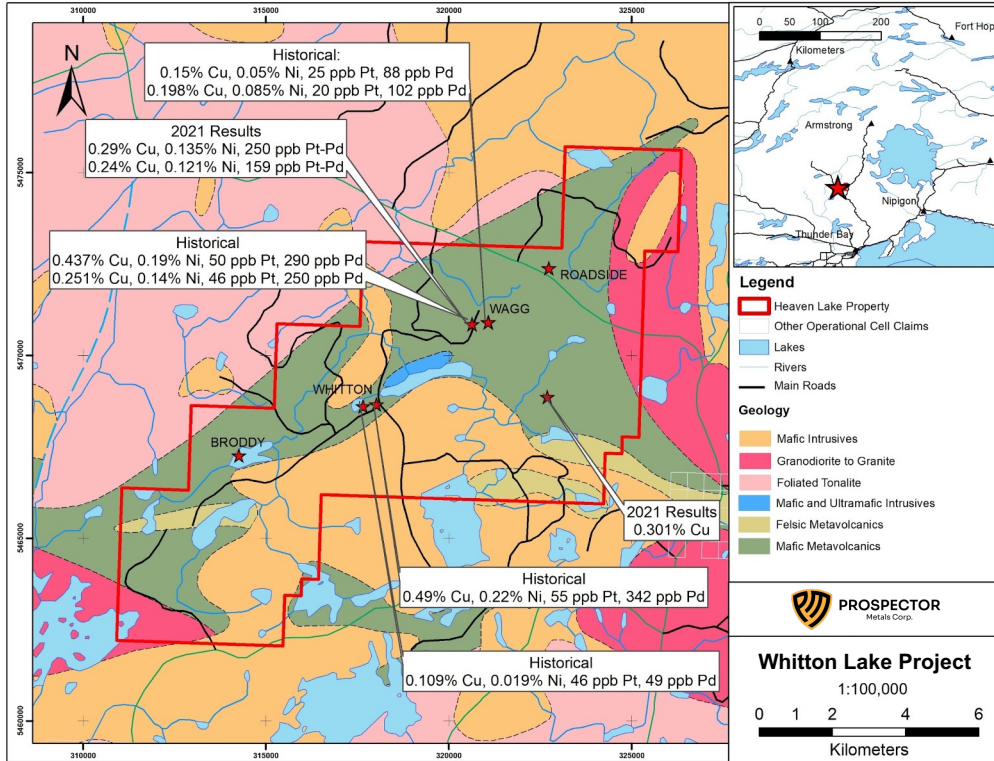
- Four weathered sub-crop grab samples with visible gold located 420m ENE of the previously announced initial outcrop.
- The grab samples are angular, loose, weathered, palm sized quartz vein material in an area of thin cover. They are interpreted to be close to source, covering an area of approximately 40m x 10m. The Toogood project area lacks significant glacial till or erratic boulders due to a low-lying marine incursion approximately 12,000 years ago. As a result, soil and boulders are interpreted as in place weathered sub-crop.
- Initial mapping and prospecting suggest mineralization may be locally associated with quartz veins that occur along NNE trending faults within sedimentary host rocks. Visible gold occurs in outcrops of quartz vein stockwork within a strongly sericitic silica pyrite altered felsic (tonalite) dike that intruded a dextral strike slip structure.
- A total of 50 channel samples across five separate channels (total 27.94m) to test the continuity of mineralization within quartz-ankerite veins hosted in altered shale and greywacke. Channel samples returned assays of 37.14 g/t Au over 0.8m, 7.0 g/t Au over 0.6m, 5.89 g/t Au over 3.2m, 4.33 g/t Au over 0.5m, 5.03 g/t Au over 0.5m and 7.25 g/t Au over 0.5m.





TOOGOOD PROJECT, Quinan Showing

- Initial sampling of previously untested outcrops identified numerous showing with visible gold within quartz veins hosted by felsic (tonalite) dykes.
- Stripping of the outcrop and subsequent geological mapping, and sampling has identified a 200m by 15m wide mineralized zone, open to depth and concentrated in along north-northeast trending structure.
- Initial mapping suggests mineralization may be locally associated with quartz veins that occur along NNE trending faults within sedimentary host rocks. Visible gold occurs in most outcrops of quartz vein stockwork within a strongly sericite silica pyrite altered felsic (tonalite) dike that intruded a dextral strike slip structure.
- A total of 59 channel samples across seven separate channels (total 30.08m) have been collected to test the continuity of mineralization. Channel samples returned assays of 10.98 g/t Au over 3.45m, 7.64 g/t Au over 4.05m, 6.83 g/t Au over 1.79m, 1.84 g/t Au over 3.36m, 1.86 g/t Au over 1.5m, 0.76 g/t Au over 1.62m, and 1.58 g/t Au over 1.6m. Results for Channels 8 and 9 (14 channel samples) remain pending.

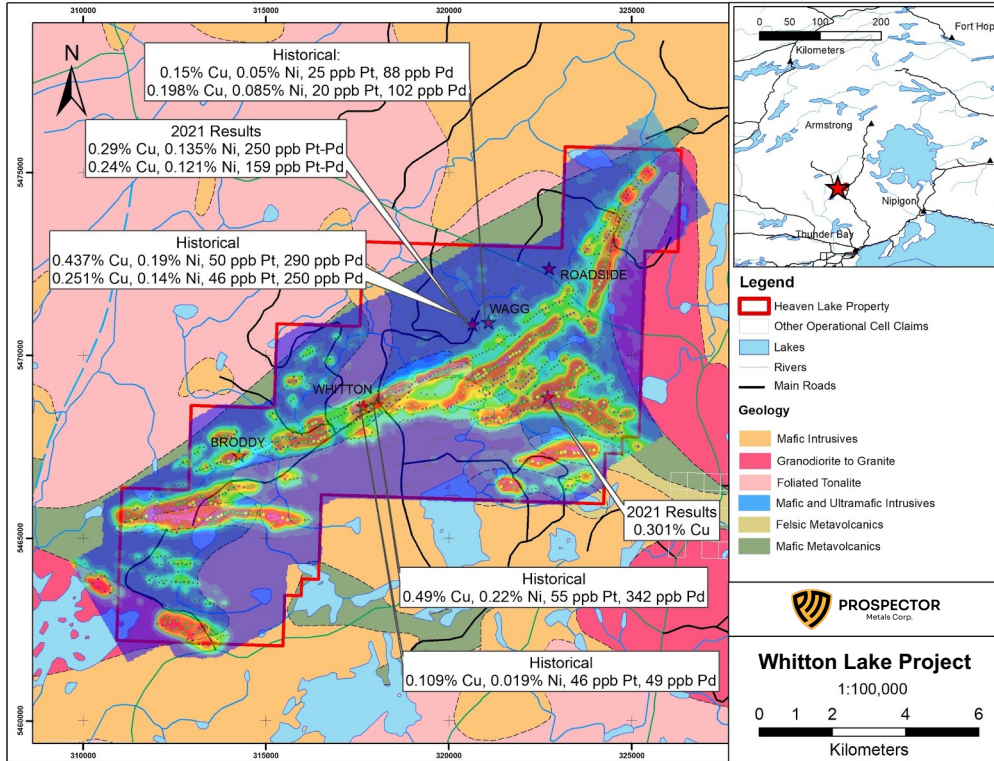


WHITTON LAKE,

Nickel, Copper, Platinum,
Palladium, Ontario

- Located within 20 km of Impala's operating Lac des Iles platinum-palladium-nickel-copper mine, and yet the property has seen only sporadic exploration in recent years.
- Project exhibits multiple magmatic sulphide and VMS type targets: Whitton, Roadcut, Wagg, Broddy.
- VTEM survey completed
- Confirmation sampling and mapping in 2021 by Ethos confirmed the location of sulphidic mafic-ultramafic intrusive units, locally anomalous in Cu, Ni and Pd-Pt





WHITTON LAKE,

2021 Work

- Confirmation sampling and mapping in 2021 by Ethos confirmed the location of sulphidic mafic-ultramafic intrusive units, locally anomalous in Cu, Ni and Pd-Pt
- Modeling of the VTEM survey conducted in 2021 suggests the presence of robust, strongly conductive linear horizons. In addition, massive sulphide and sulphidic Iron formation correlates with the geophysics in a number of locations.



WHITTON LAKE

Nickel, Copper, Platinum, Palladium, Ontario

WHITTON LAKE

Under explored greenstone belt → no previous large-scale exploration programs completed	✓
Proven regional endowment → NW Ontario segment of superior province hosts world class precious and base metal deposits - within 20km of Impala's Lac des Iles operating Ni-Cu-PGE mine	✓
Multiple major zones along NE trend → favorable trends for syn-volcanic VMS mineralization, mafic-ultramafic (MUM) intrusions with Ni-Cu-PGE sulfides	✓
Robust geophysical targets identified in 2021 VTEM survey → multiple ready to drill, both MUM hosted Ni-Cu-PGE sulfides and for syn-volcanic VMS deposits	✓
Other MUM Ni-Cu-PGE targets → a significant trend of blebby PGE enriched sulfides at the Wagg target will be followed up in Spring 2022 with an IP survey and prospecting to define specific drill targets	✓



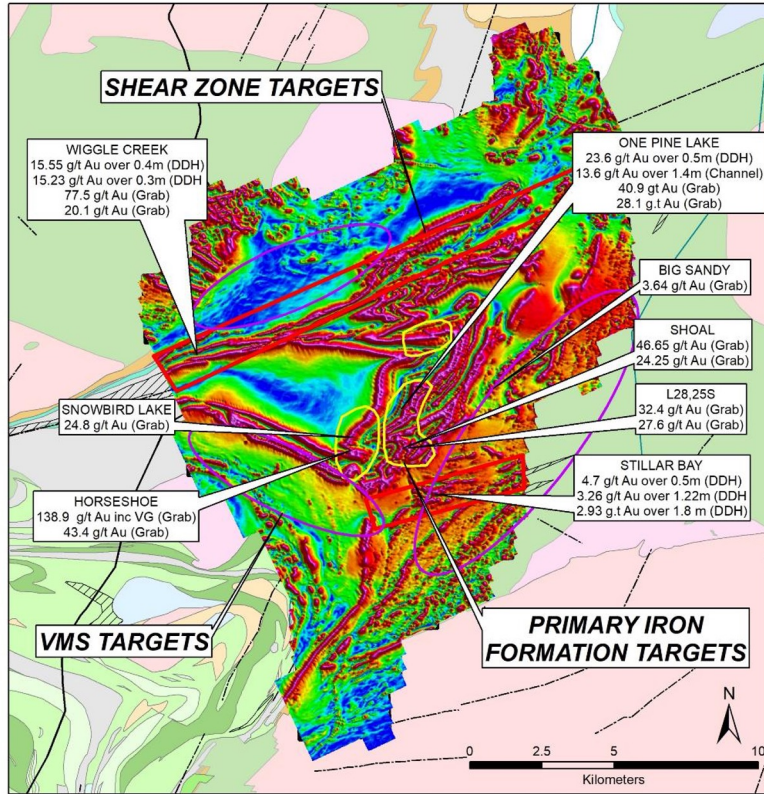


WHITTON LAKE,

Exploration 2022

- Line Cutting, Ground TEM at the Whitton target followed by drill testing (3000m) in H1
- Line Cutting, Ground IP at Wagg target followed by drill testing (1000m).
- Additional mapping, geochemical fingerprinting, stripping and prospecting along the strike at Roadcut.
- Additional prospecting along EM anomaly at Broddy with possible diamond drilling to follow.
- Permits are pending.





SAVANT LAKE

Iron Formation Hosted High-grade Gold, Ontario

- 22,900 ha property, road accessible 240 km northwest of Thunder Bay, Ontario.
- High grade gold mineralization over 10 x 10 km area.
- Multiple untested high-grade targets.
- Similar setting to Newmont's Musselwhite Mine, Agnico Eagle's Meadowbank and Amaruq mines.
- Airborne Magnetic Survey Complete.



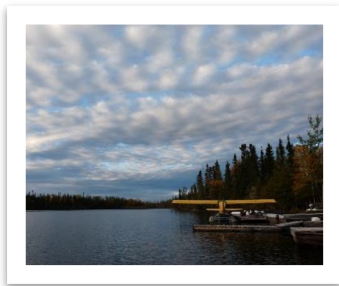
SAVANT LAKE

Iron Formation Hosted High-grade Gold, Ontario

Showing	Lithology	Best Surface Sample Assay (g/tAu)	Best Historical Drillhole Intercept
Horseshoe	Iron Formation	138.87	Never drilled
Wiggle Creek	Iron Formation	77.50 ^{1,2}	15.55 g/t Au over 0.4m ¹
Shoal	Iron Formation	46.65 ^{1,2}	1.87 g/t Au over 0.6m ¹
One Pine	Iron Formation	40.87	23.6 g/t Au over 0.5m ¹
Snowbird	Iron Formation	38.8	Never drilled
L28	Iron Formation	32.35	Never drilled
Stillar Bay	Sheared Iron Formation	4.01 ^{1,2}	3.26 g/t Au over 1.22m ¹
Big Sandy	Sheared Volcanics	3.64	Never drilled



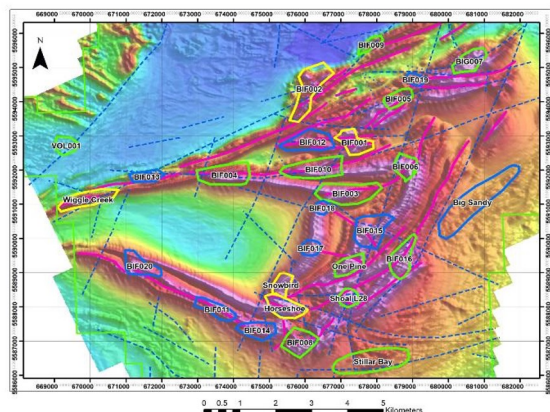
Priority	Name	Geologic Reasons for Selection	Planned Initial Follow-up	Au ppm in Rock	Best Drill Intercept	Highest Tau
1	Horseshoe	BIF, Fold nose, SZ	GeoProbe/ Prospect/ Gmag	138.9		5.35
1	Snowbird	BIF	GeoProbe/ Prospect/ Gmag	38.8	0.27m at 17 g/t	8.5
1	BIF001	BIF, Fold Nose, SZ	Prospect/ GMag	0.171		2.17
1	BIF002	BIF, Fold nose, SZ, contact w volc	Prospect/ Gmag	0.064		41.2
1	Wiggle Creek	BIF, SZ	GeoProbe/ Prospect/ Gmag	20.1	0.4m at 15g/t	4.46
2	BIF003	BIF, Fold nose, SZ	Prospect	0.005		6.77
2	BIF004	BIF, Fold nose, SZ	Prospect	0.005		5.5
2	BIF005	BIF, Fold nose, SZ	Prospect	0.005		7.92
2	BIF006	BIF, Fold nose, SZ	Prospect	0.078		5.56
2	BIG007	BIF, Fold nose, SZ	Prospect	0.088		14.37
2	VOL001	Mafic volc, F1 anticline	Prospect	-9999		1.51
2	BIF008	BIF, SZ	Prospect	0.005		2.86
2	One Pine	BIF, SZ	Prospect/ Gmag	44.8	0.46m at 21.5g/t	4.75
2	BIF009	BIF, Fold nose, SZ, contact w volc	Prospect	0.005		4.09
2	BIF010	BIF, Fold nose, SZ	Prospect	-9999		2.69
2	BIF016	BIF, Fold nose, SZ	Prospect	0.095		5.26
2	Shoal L28	BIF, Fold nose, SZ	Prospect	22.11	0.6m at 1.7g/t	2.01
2	Stillar Bay	BIF, chl-cb-fuch-py SZ, contact w volc	Prospect	3.89	1.22m at 3.26 g/t	5.51
3	BIF011	BIF, SZ	Prospect	0.005		5.63
3	BIF012	BIF, Fold nose, SZ	Prospect	-9999		0.03
3	BIF013	BIF, SZ	Prospect	0.005		5.1
3	BIF014	BIF, SZ	Prospect	-9999		5.67
3	BIF015	BIF, Fold nose, SZ	Prospect	0.142		19.89
3	BIF017	BIF, SZ	Prospect	-9999		4.92
3	BIF018	BIF, SZ	Prospect	-9999		3.38
3	BIF019	BIF, Fold nose, SZ	Prospect	0.005		0.03
3	BIF020	BIF, SZ	Prospect	-9999		1.51
1	Big Sandy	BIF, SZ at gwycke / volc contact	Prospect	0.9		5.95



SAVANT LAKE

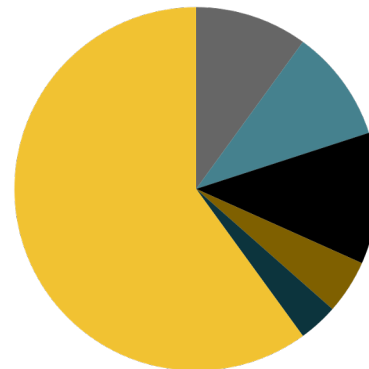
Exploration 2022


- Prospecting, Mapping to confirm and define shear and alteration zones
- Detailed sampling of Priority 1 targets at Wiggle and One Pine, together with ground magnetic surveys,
- Follow up additional targets with prospecting and Mapping
- Conduct property-wide LiDar survey
- Diamond Drilling of select targets H2.
- Fully permitted.



INVESTOR INFO

EXCHANGE.....TSX-V ▪ OTCQX ▪ FRANKFURT
SYMBOLS..... PPP ▪ ETHOF ▪ 1ET
SHARE PRICE0.55 ▪ US 0.45 ▪ € 0.40
SHARES OUTSTANDING54.5M
OPTIONS4.3M ▪ Avg. Ex. Price: 0.63
WARRANTS10.6M ▪ Avg. Ex. Price: 0.93



- **10%** Insiders
- **10%** Advisors
- **11.7%**  **CRESCAT CAPITAL**
VALUE-DRIVEN PERFORMANCE
- **4.8%** Eric Sprott
- **3.5%** Institutional
- **60%** Retail





PROSPECTOR

Metals Corp.

ALEX HEATH, CFA

President & CEO

Email **alexh@prospectormetalscorp.com**

Phone **+1 (604) 354-2491**

Address **1430 – 800 West Pender Street,
Vancouver B.C. V6C 2V6**

Website **prospectormetalscorp.com**

